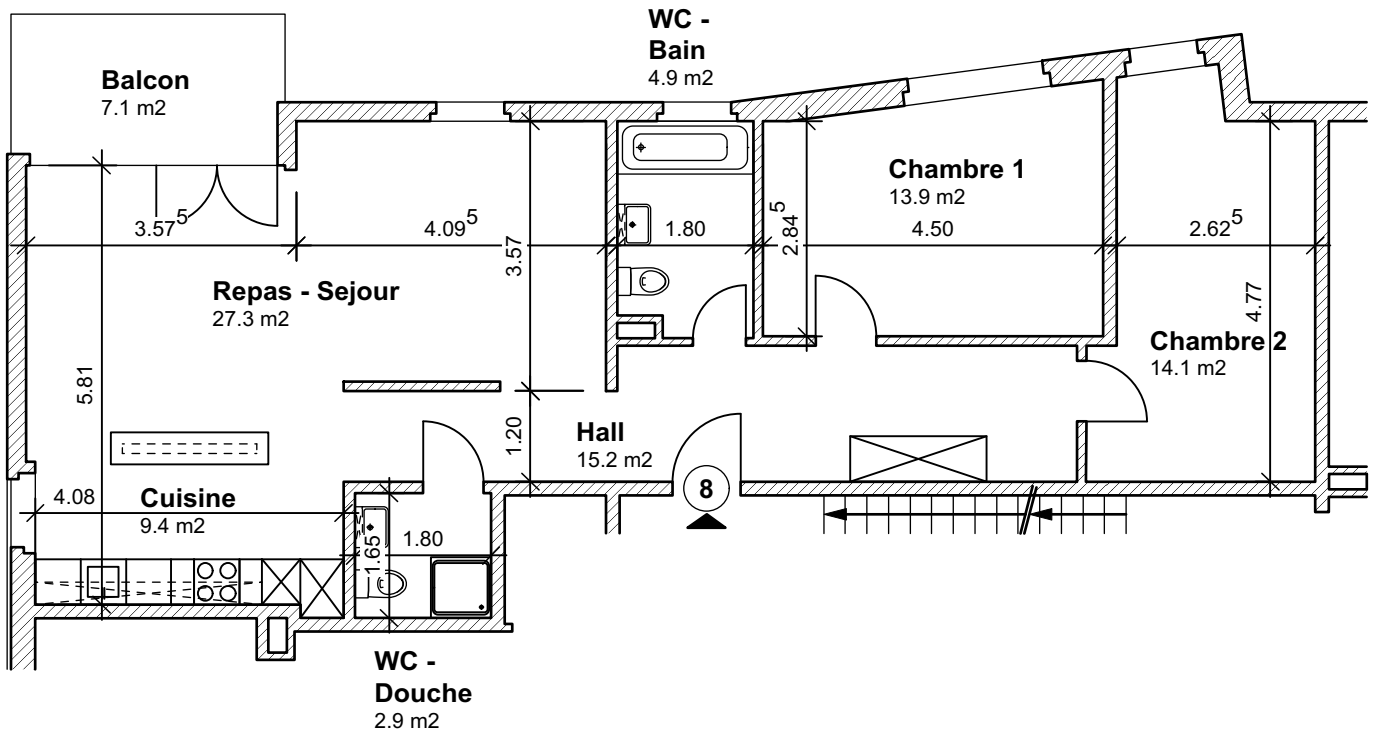


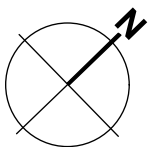
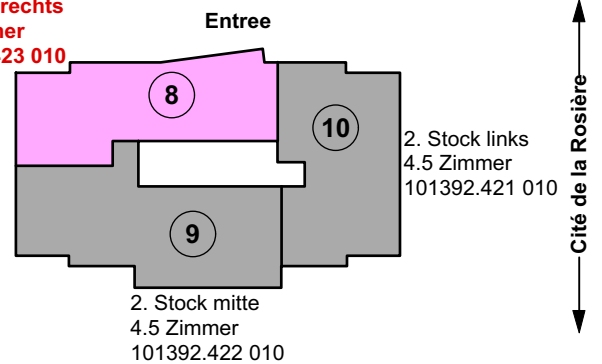
Legende:

Hall:	15.2 m ²
Chambre 2:	14.1 m ²
Chambre 1:	13.9 m ²
WC - Bain:	4.9 m ²
Repas - Sejour:	27.3 m ²
Cuisine:	9.4 m ²
WC - Douche:	2.9 m ²
	87.7 m²

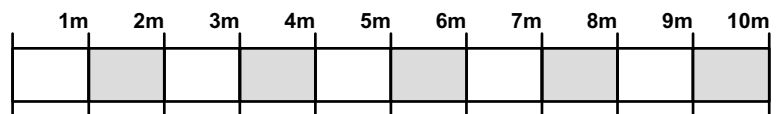
Balcon: 7.1 m²



2. Stock rechts
3.5 Zimmer
101392.423 010



Route d'Yverdon



Mehrfamilienhaus Cité de la Rosière 1, 1470 Estavayer - le - Lac

Vermietungsplan: 2. Stock rechts / 3 1/2 Zimmerwohnung / 101392.423 010

Masstab

1:100

Plangröße

21 x 30 cm

Erstelldatum

16.10.2015