

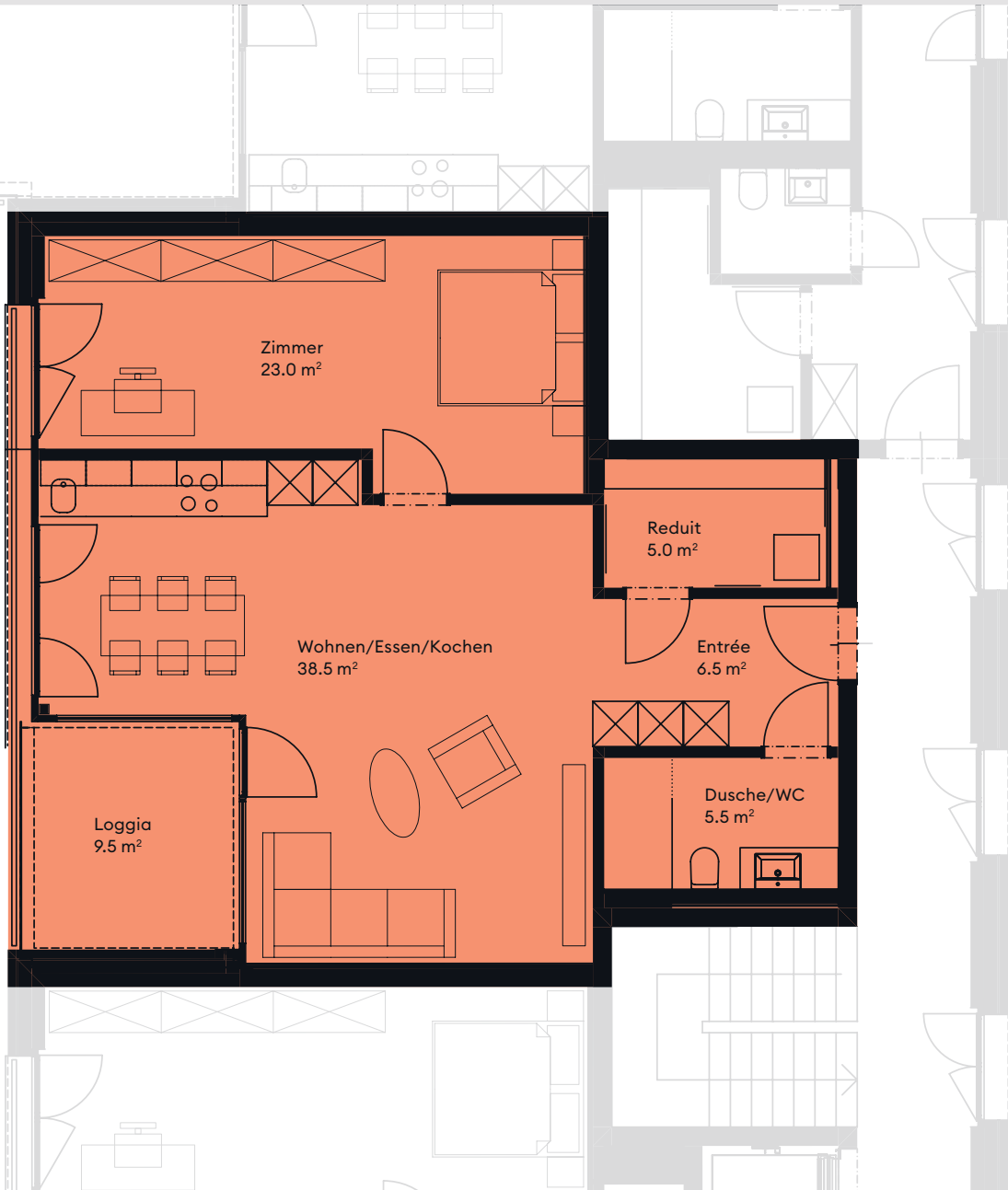
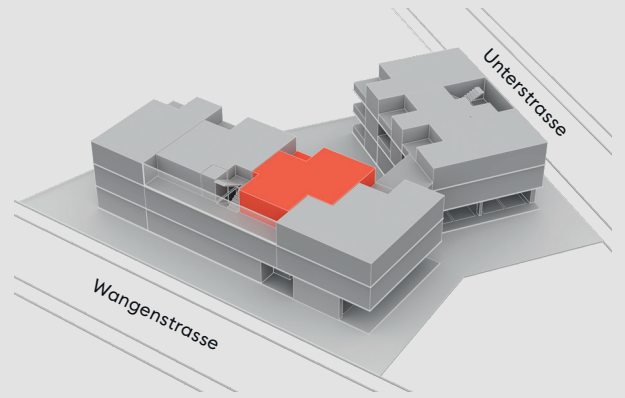
## A23

### 2.5-Zimmerwohnung

2. Obergeschoss

Wohnfläche ca. 78.5 m<sup>2</sup>

Loggia ca. 9.5 m<sup>2</sup>



#### Vermietung

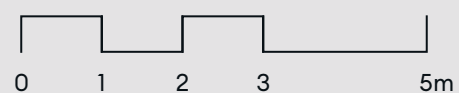
Treuhand Gerber + Co AG

Tel. 062 956 66 77

[www.treuhand-gerber.ch](http://www.treuhand-gerber.ch)

[www.buchsihof.ch](http://www.buchsihof.ch)

#### Masstab



Projekt- & Terminänderungen vorbehalten.