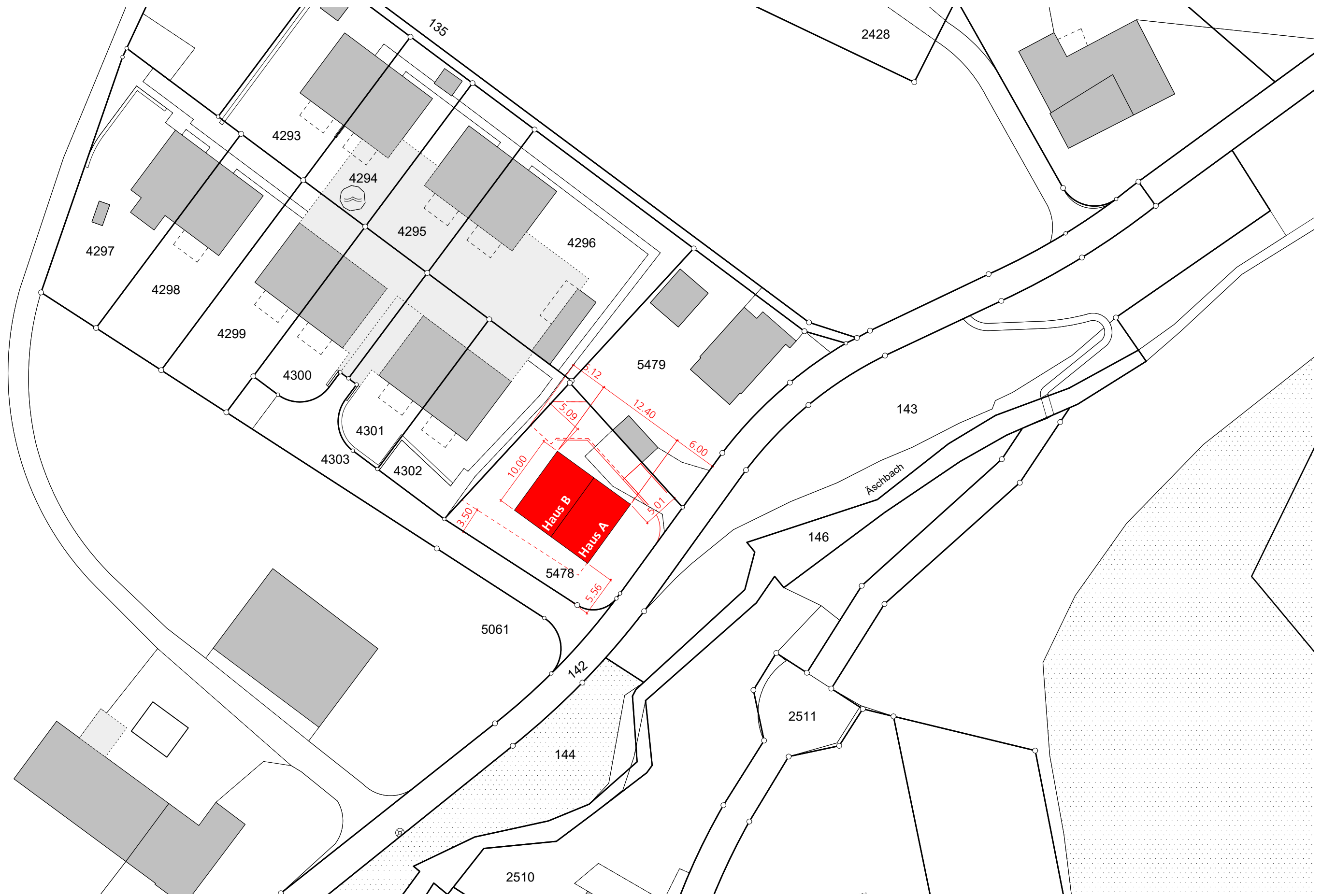
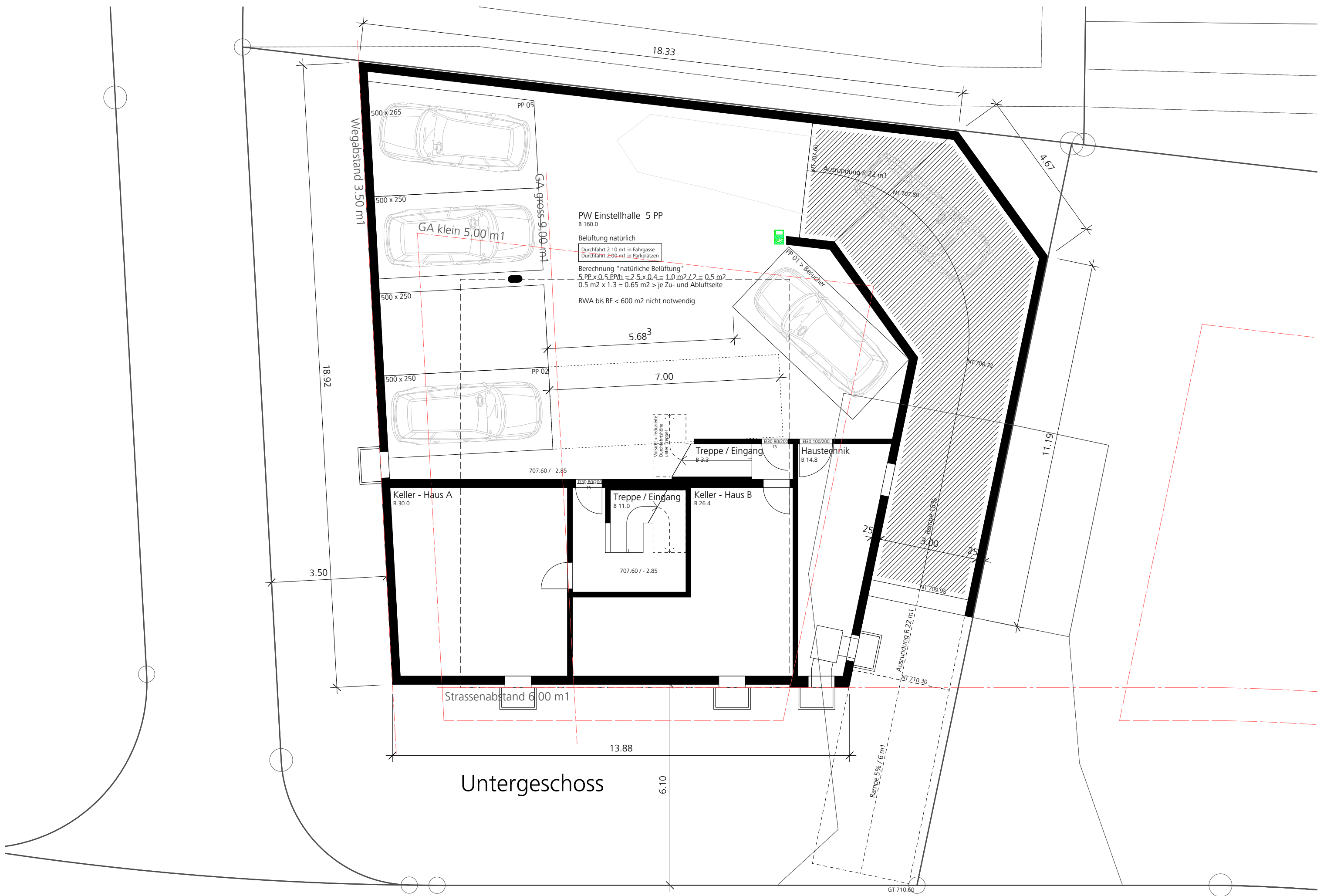


Zürcher Steg

2107 Neubau DEFH Kat.Nr. 4292 Hörnlistrasse 8496 Steg im Tösstal
BP 100 / 08.08.2022 / rev. 23.01.2023 lke

KELLER ARCHITEKTEN AG

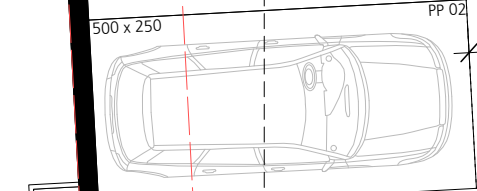
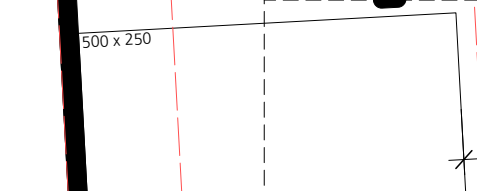
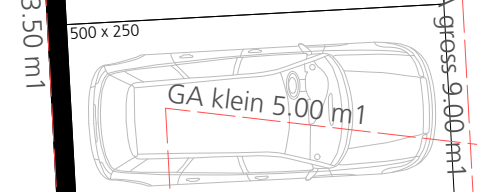
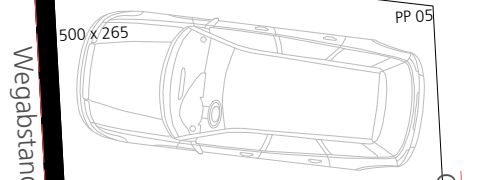




PW Einstellhalle 5 PP
B 160.0

Belüftung natürlich
Durchfahrt 2.10 m¹ in Fahrgasse
Durchfahrt 2.00 m¹ in Parkplätzen

Berechnung "natürliche Belüftung"
 $5 \text{ PP} \times 0.5 \text{ PP/h} = 2.5 \times 0.4 = 1.0 \text{ m}^2 / 2 = 0.5 \text{ m}^2$
 $0.5 \text{ m}^2 \times 1.3 = 0.65 \text{ m}^2 > \text{ je Zu- und Abluftseite}$
 RWA bis BF < 600 m² nicht notwendig



Keller - Haus A
B 30.0

Treppe / Eingang
B 11.0

Keller - Haus B
B 26.4

Haustechnik
B 14.8

Strassenabstand 6.00 m¹

Untergeschoss

18.33

Wegabstand 3.50 m¹

18.92

3.50

13.88

6.10

5.68³

7.00

4.67

11.19

Ausrundung R 22 m¹

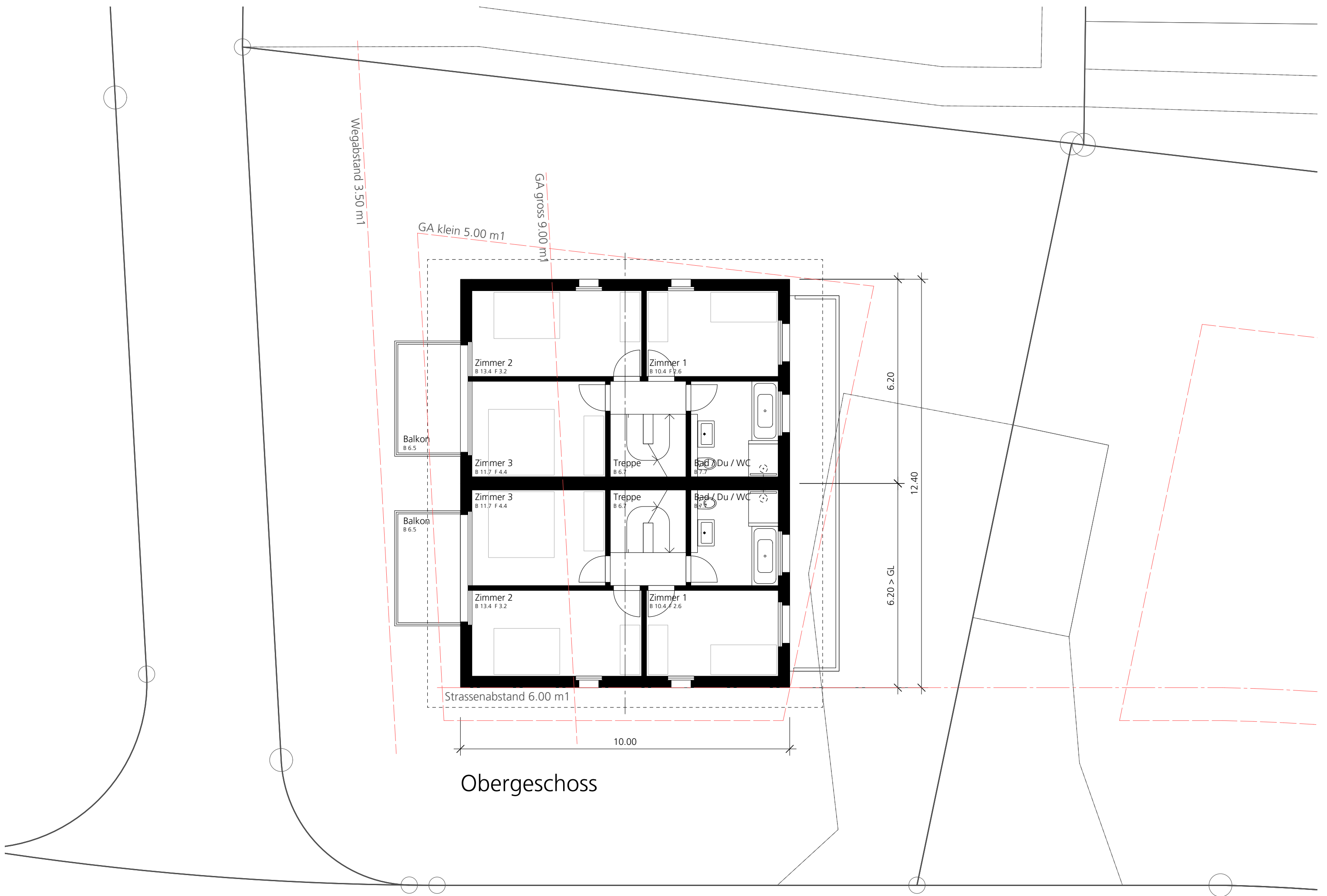
Ausrundung R 22 m¹

Rampe 5% / 6 m¹

GT 710.60







Wegabstand 3.50 m1

GA klein 5.00 m1

GA gross 9.00 m1

Zimmer 2
B 13.4 F 3.2

Zimmer 1
B 10.4 F 2.6

Balkon
B 6.5

Zimmer 3
B 11.7 F 4.4

Treppe
B 6.7

Bad / Du / WC
B 7.7

Zimmer 3
B 11.7 F 4.4

Treppe
B 6.7

Bad / Du / WC
B 7.7

Zimmer 2
B 13.4 F 3.2

Zimmer 1
B 10.4 F 2.6

Strassenabstand 6.00 m1

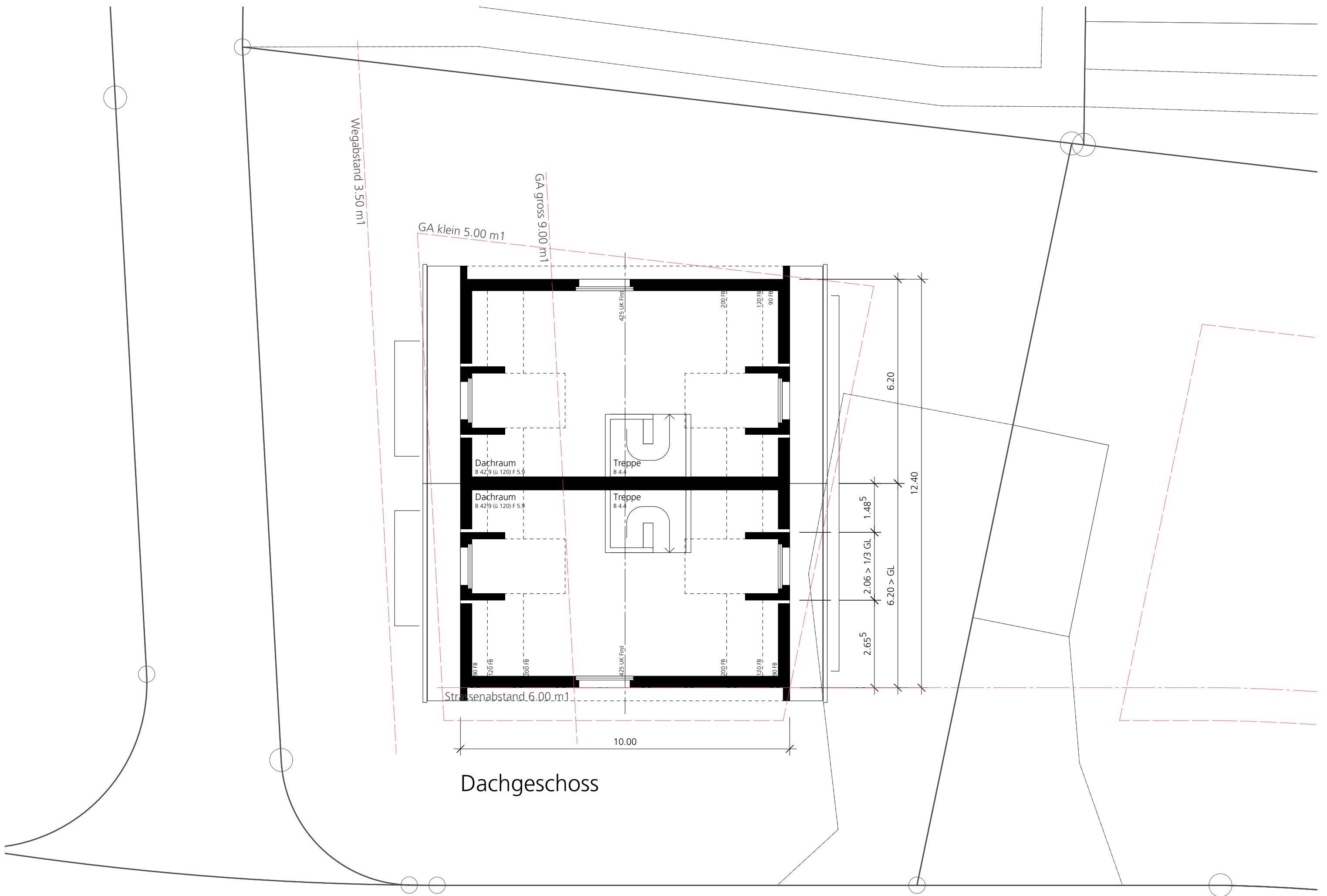
10.00

6.20

12.40

6.20 > GL

Obergeschoss



Dachgeschoss

Firsthöhe
+ 10.60

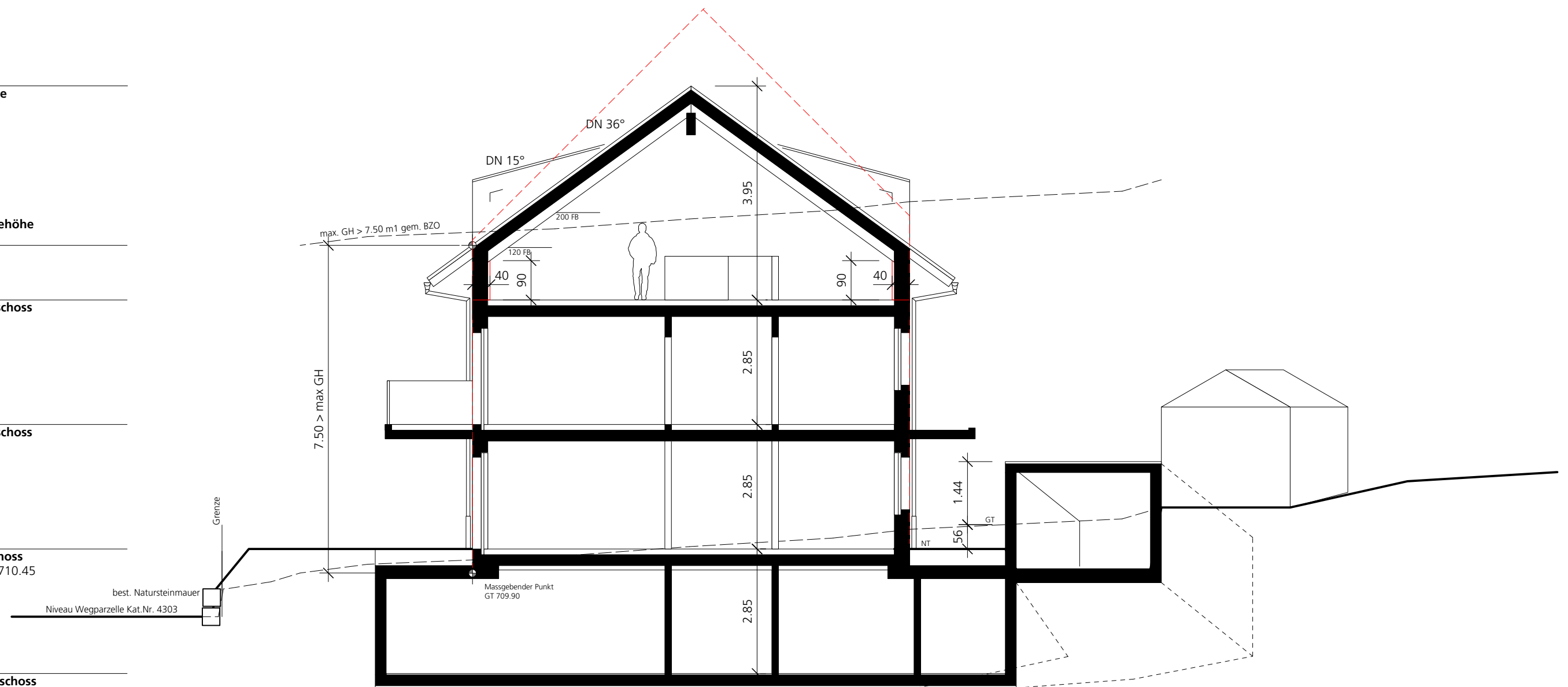
Gebäudehöhe
+ 6.95

Dachgeschoss
+ 5.70

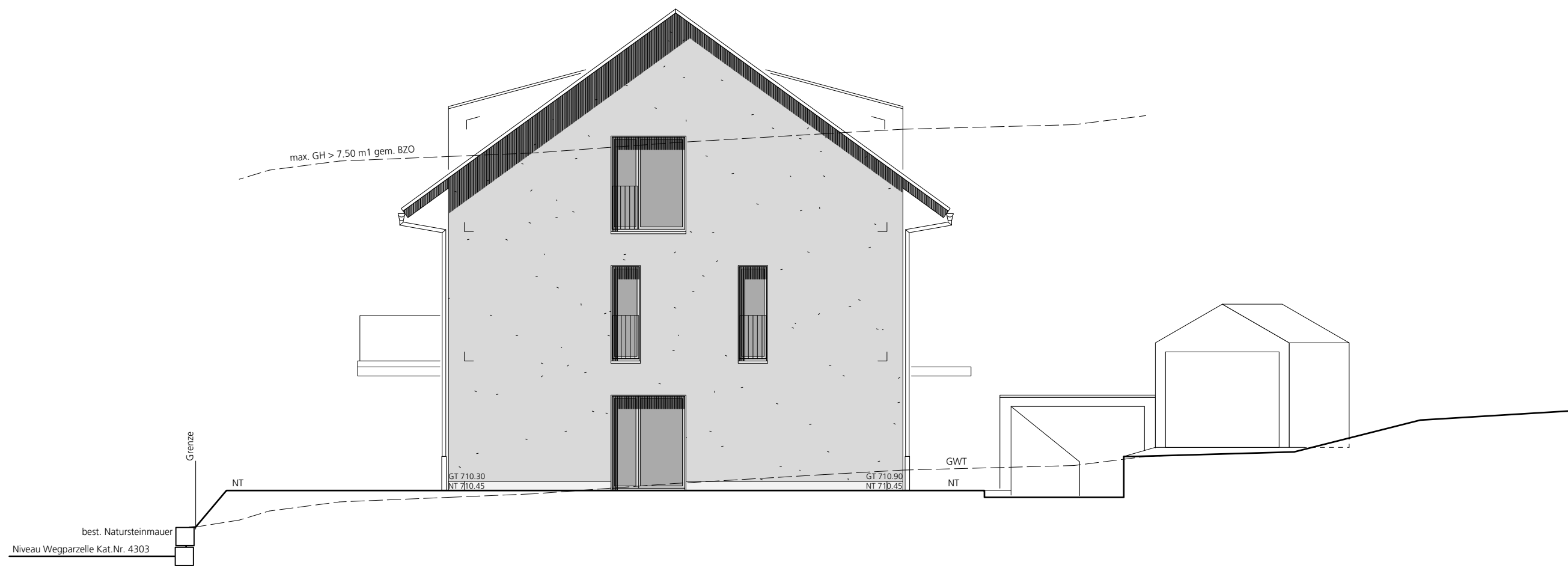
Obergeschoss
+ 2.85

Erdgeschoss
+ 0.00 / 710.45

Untergeschoss
- 2.85 / 707.60



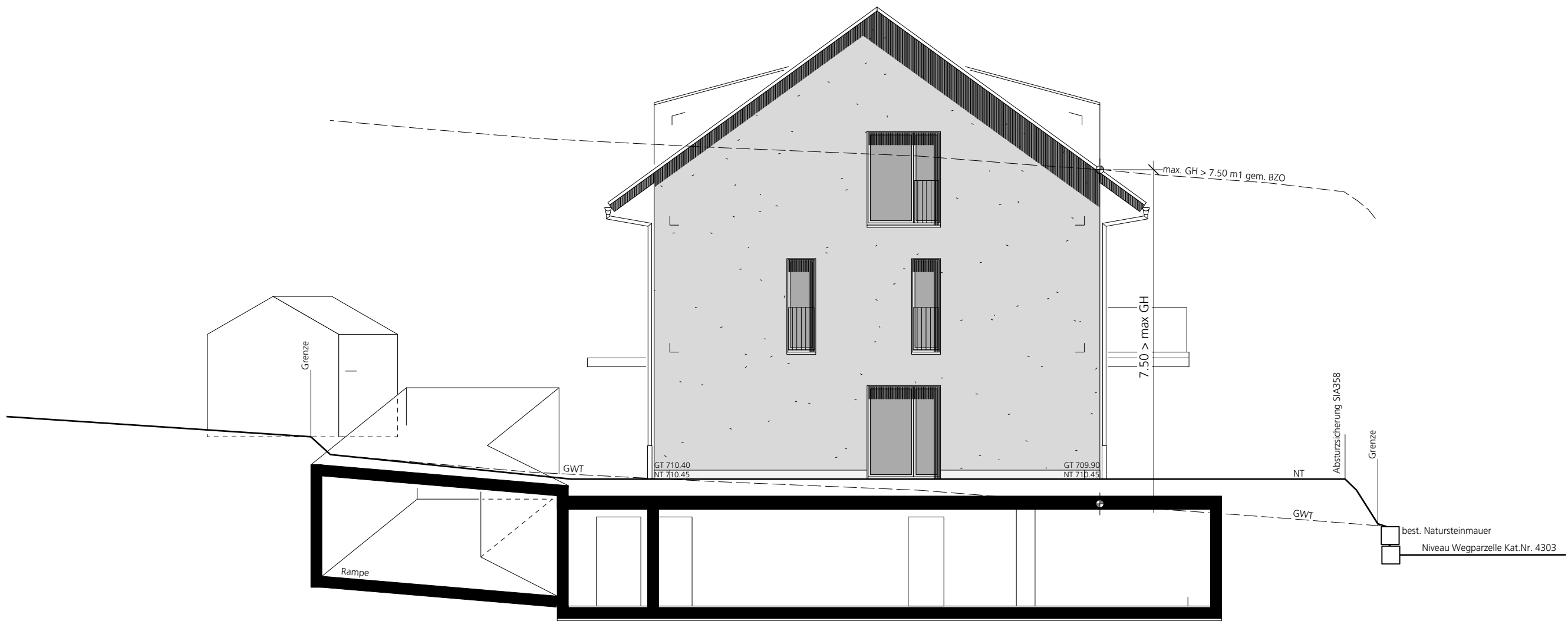
Querschnitt



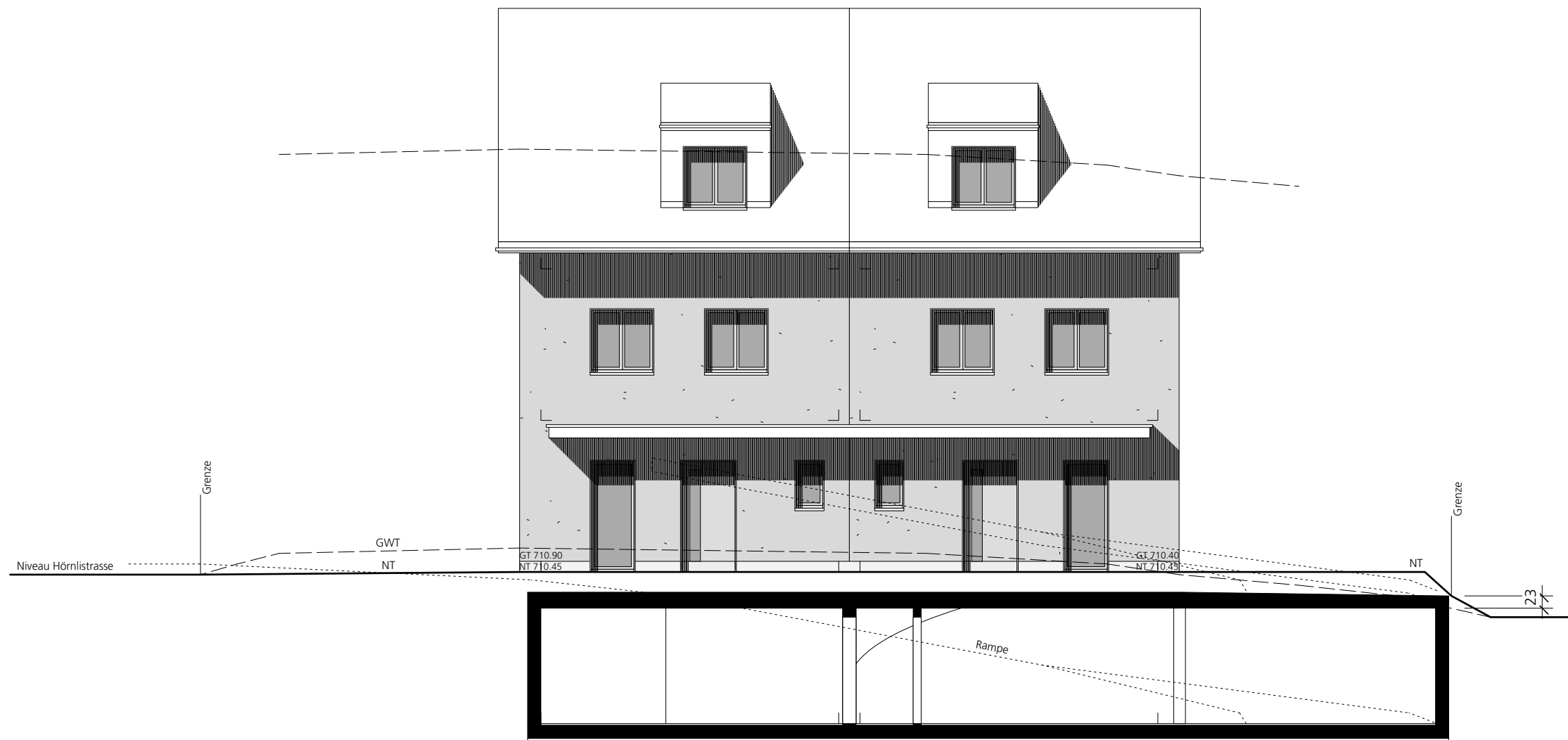
Südostfassade



Südwestfassade



Nordwestfassade



Nordostfassade