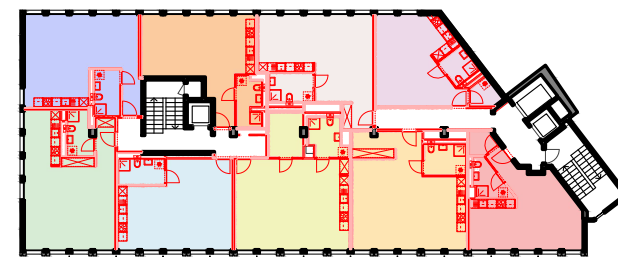


Lot 1

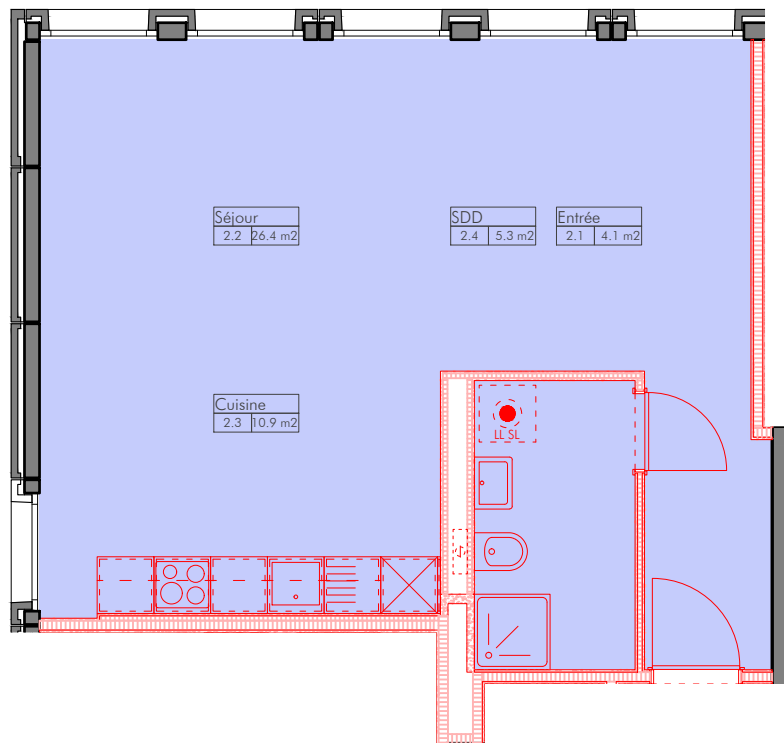
- Entrée	4.1 m ²
- Séjour	33.9 m ²
- Cuisine	8.7 m ²
- Salle de douche	4.9 m ²

Surface nette habitable : 51.6 m²



Logements Mornex

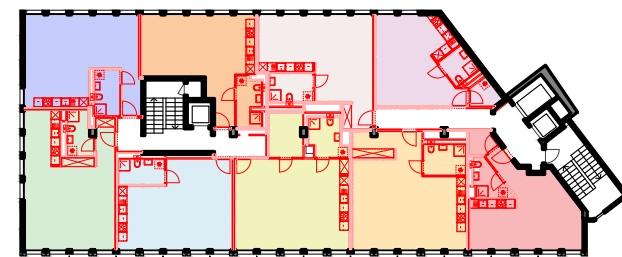




Lot 2

- Entrée 4.1 m²
- Séjour 26.4 m²
- Cuisine 10.9 m²
- Salle de douche 5.3 m²

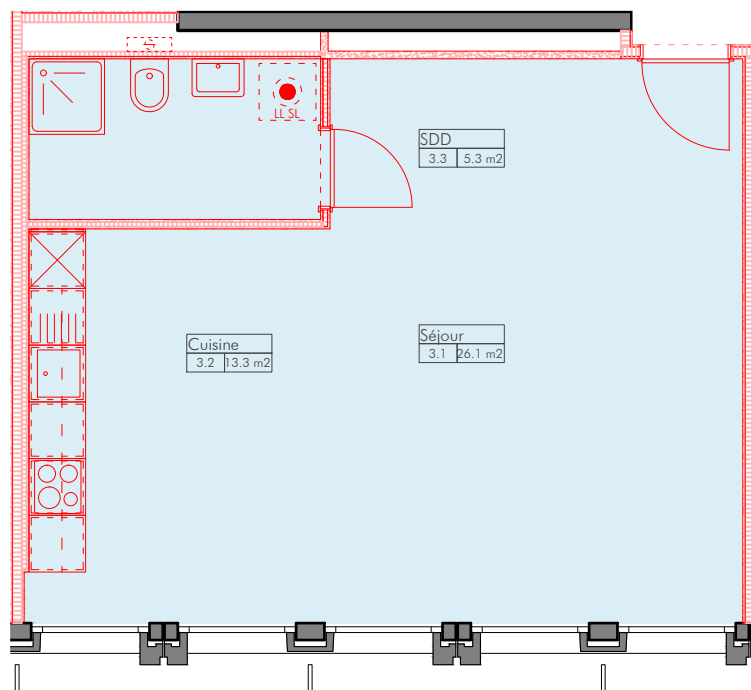
Surface nette habitable : 46.7 m²



Logements Mornex

Parcelle n° 5885 à Lausanne | Chemin de Mornex 2-4 | 2ème étage | Lot 2 | 1:80 | 11.10.2023
 atelier zéro2 sa | avenue du théâtre 14 | 1005 lausanne | tél. +4121 624 85 16 | mail@zero2.ch

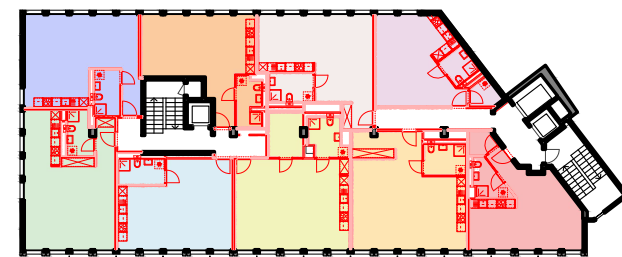




Lot 3

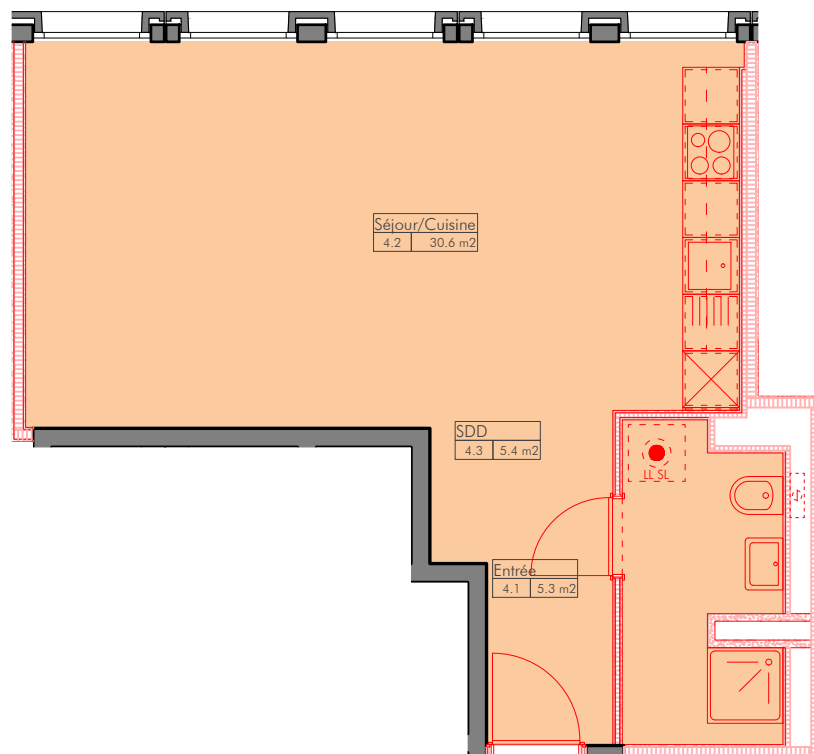
- Séjour 26.1 m²
- Cuisine 13.3 m²
- Salle de douche 5.3 m²

Surface nette habitable : 44.7 m²



Logements Mornex

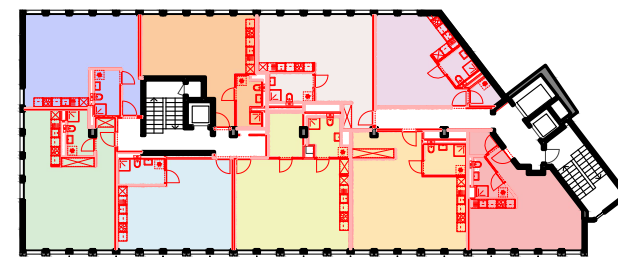




Lot 4

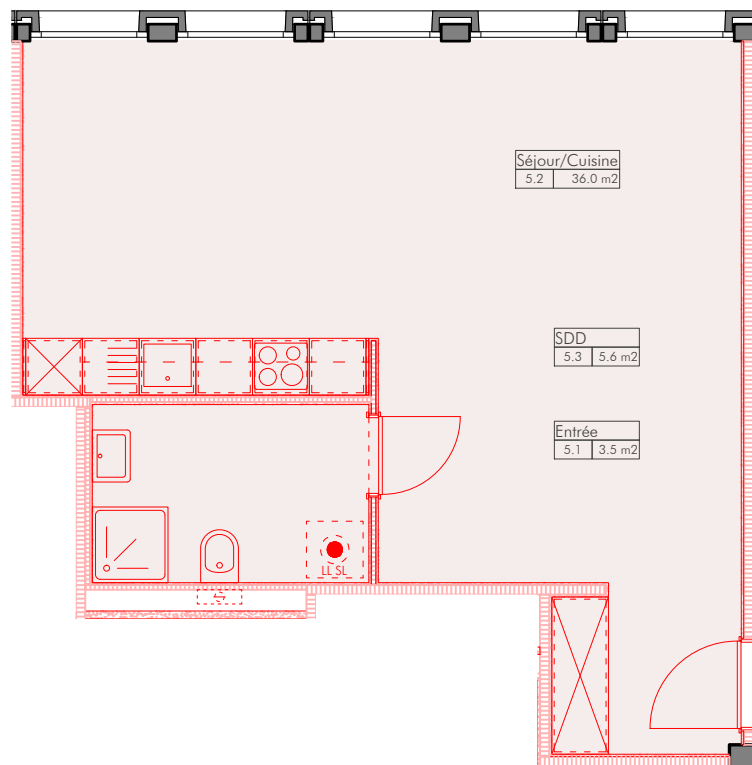
- Entrée 5.3 m²
- Séjour/cuisine 30.6 m²
- Salle de douche 5.4 m²

Surface nette habitable : 41.3 m²



Logements Mornex

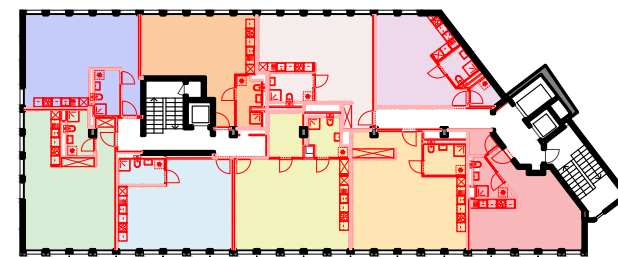




Lot 5

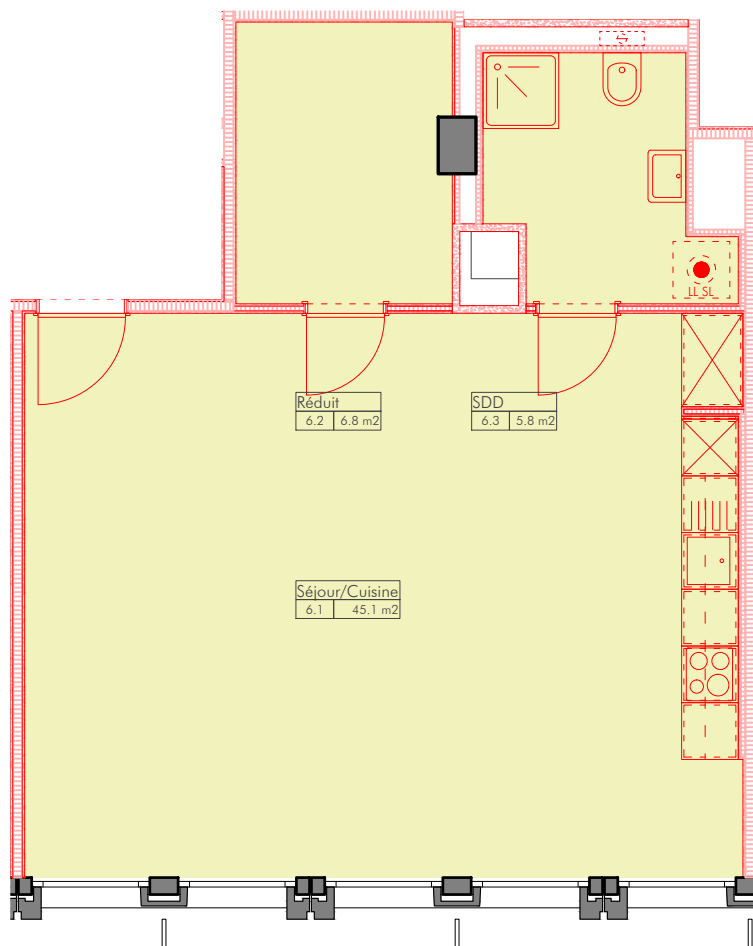
- Entrée 3.5 m²
- Séjour/cuisine 36.0 m²
- Salle de douche 5.6 m²

Surface nette habitable : 45.1 m²



Logements Mornex

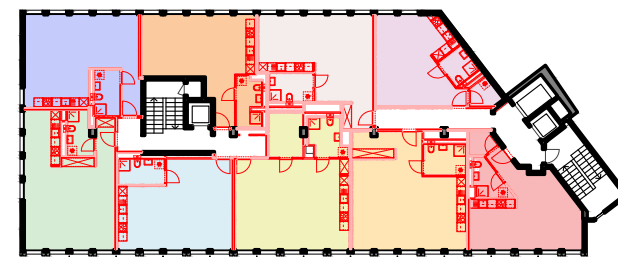




Lot 6

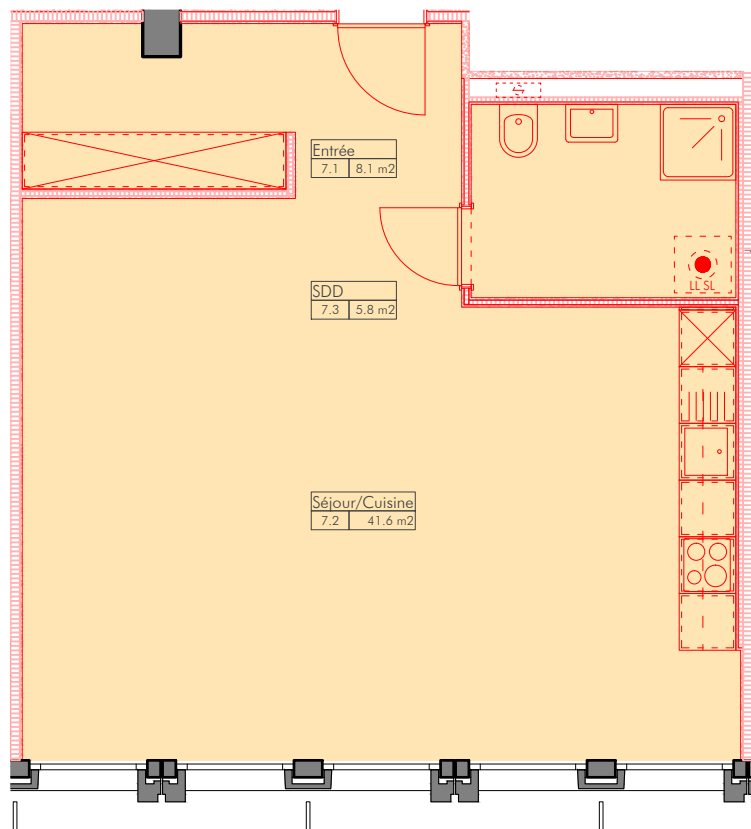
- Réduit 6.8 m²
- Séjour/cuisine 45.1 m²
- Salle de douche 5.8 m²

Surface nette habitable : 57.7 m²



Logements Mornex

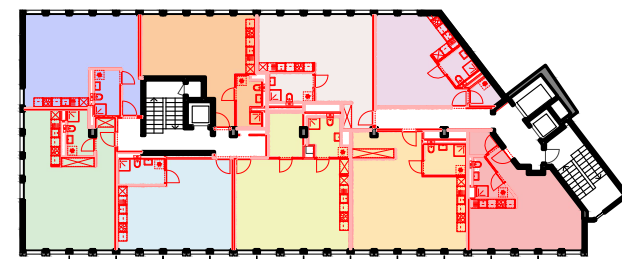




Lot 7

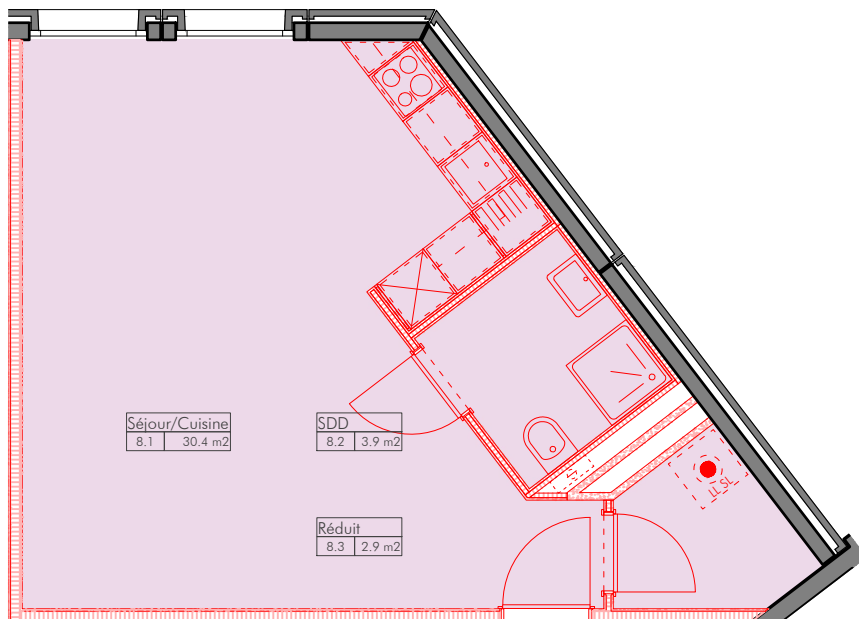
- Entrée 8.1 m²
- Séjour/cuisine 41.6 m²
- Salle de douche 5.8 m²

Surface nette habitable : 55.5 m²



Logements Mornex

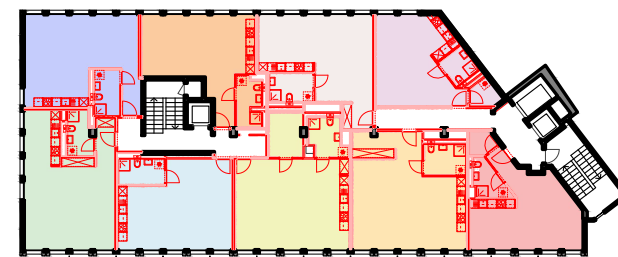




Lot 8

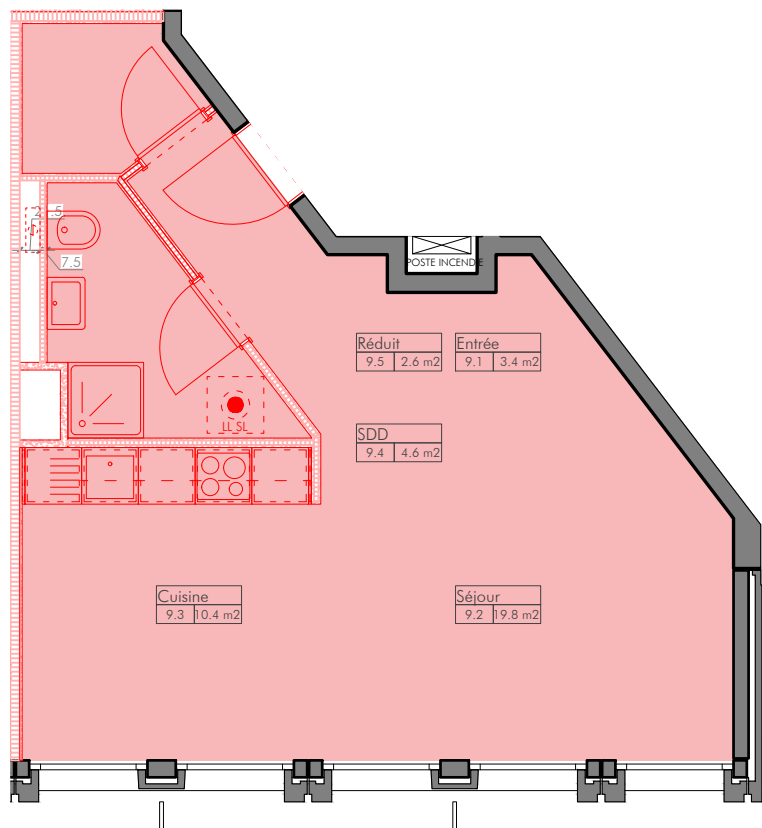
- Réduit 2.9 m²
- Séjour/cuisine 30.4 m²
- Salle de douche 3.9 m²

Surface nette habitable : 37.2 m²



Logements Mornex

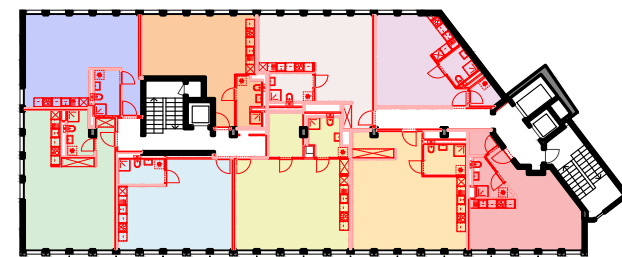




Lot 9

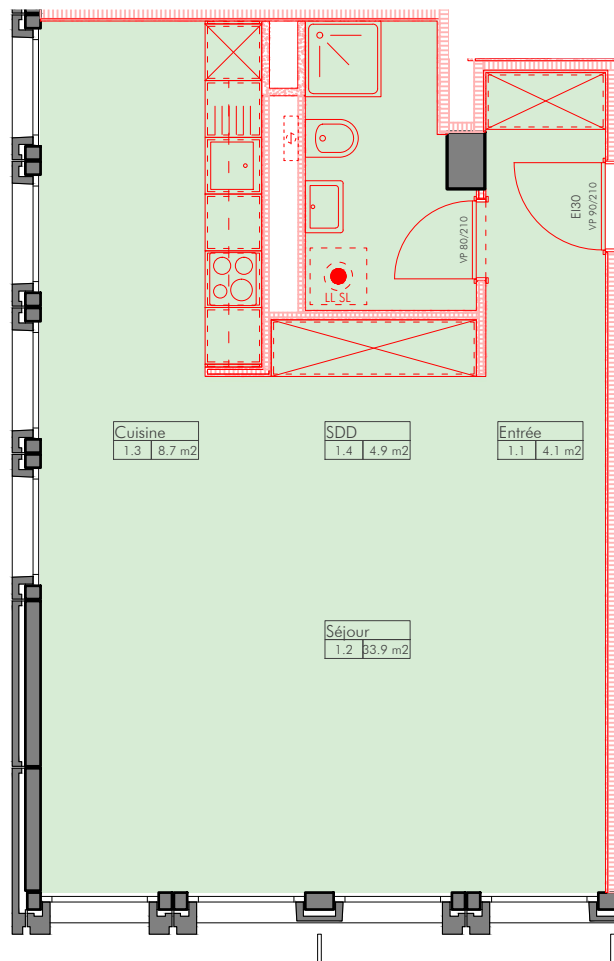
- Entrée	3.4 m ²
- Réduit	2.6 m ²
- Séjour/cuisine	19.8 m ²
- Cuisine	10.4 m ²
- Salle de douche	4.6 m ²

Surface nette habitable : 40.8 m²



Logements Mornex

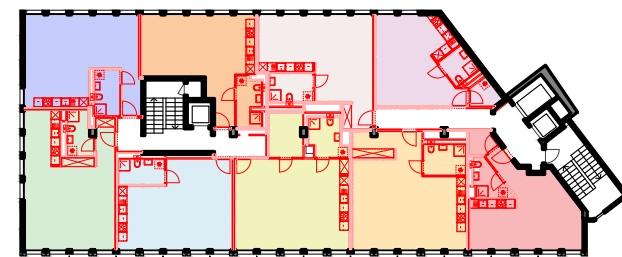




Lot 10

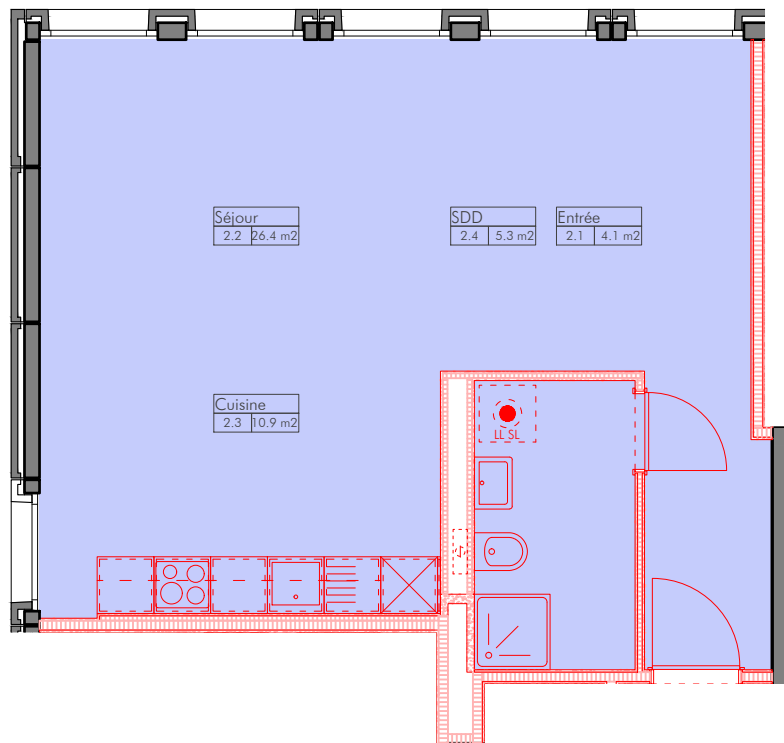
- Entrée 4.1 m²
- Séjour 33.9 m²
- Cuisine 8.7 m²
- Salle de douche 4.9 m²

Surface nette habitable : 51.6 m²



Logements Mornex

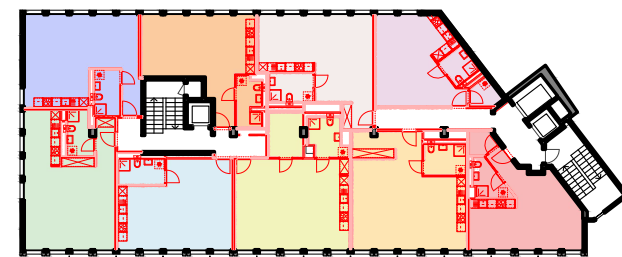




Lot 11

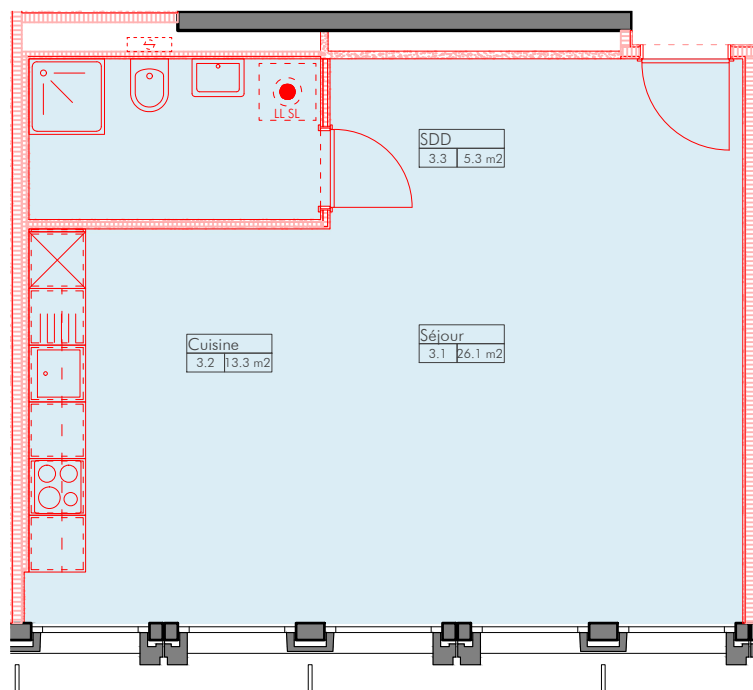
- Entrée 4.1 m²
- Séjour 26.4 m²
- Cuisine 10.9 m²
- Salle de douche 5.3 m²

Surface nette habitable : 46.7 m²



Logements Mornex

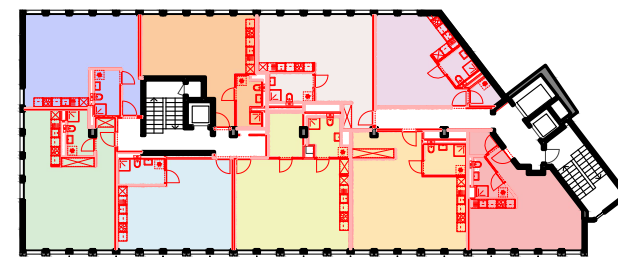




Lot 12

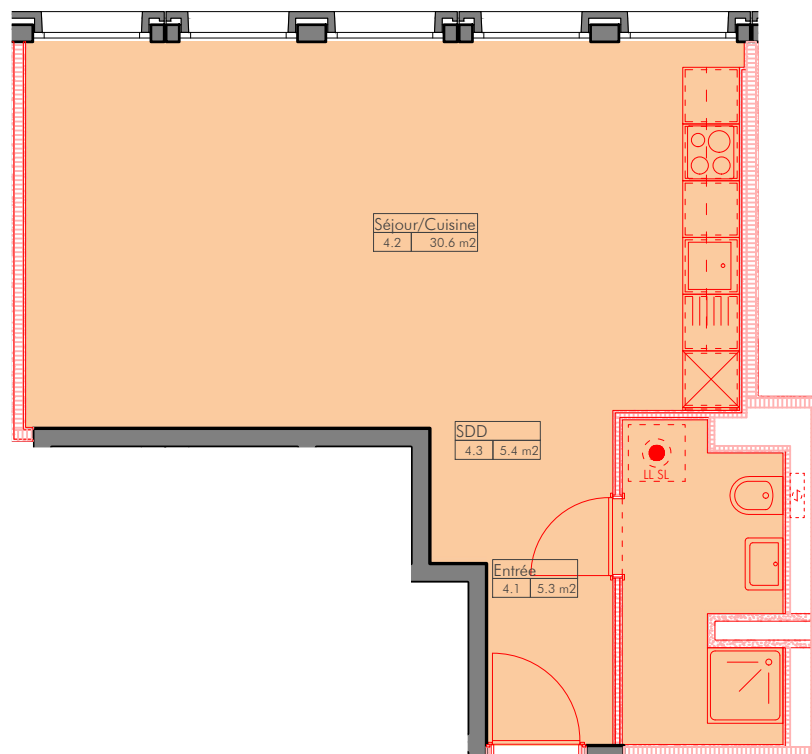
- Séjour 26.1 m²
- Cuisine 13.3 m²
- Salle de douche 5.3 m²

Surface nette habitable : 44.7 m²



Logements Mornex

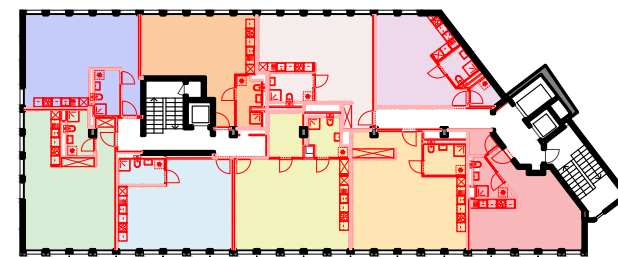




Lot 13

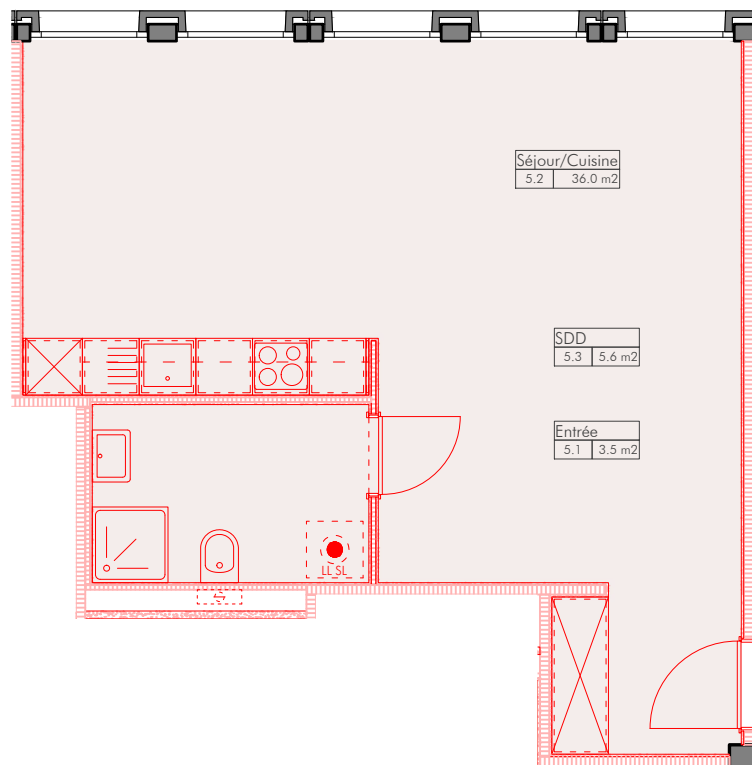
- Entrée 5.3 m²
- Séjour/cuisine 30.6 m²
- Salle de douche 5.4 m²

Surface nette habitable : 41.3 m²



Logements Mornex

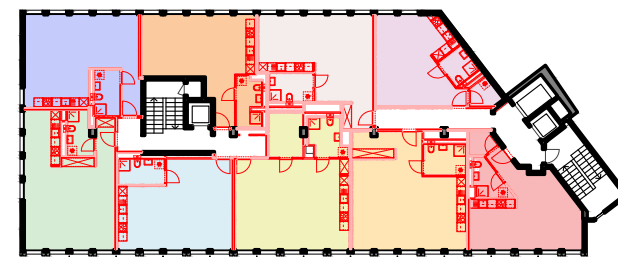




Lot 14

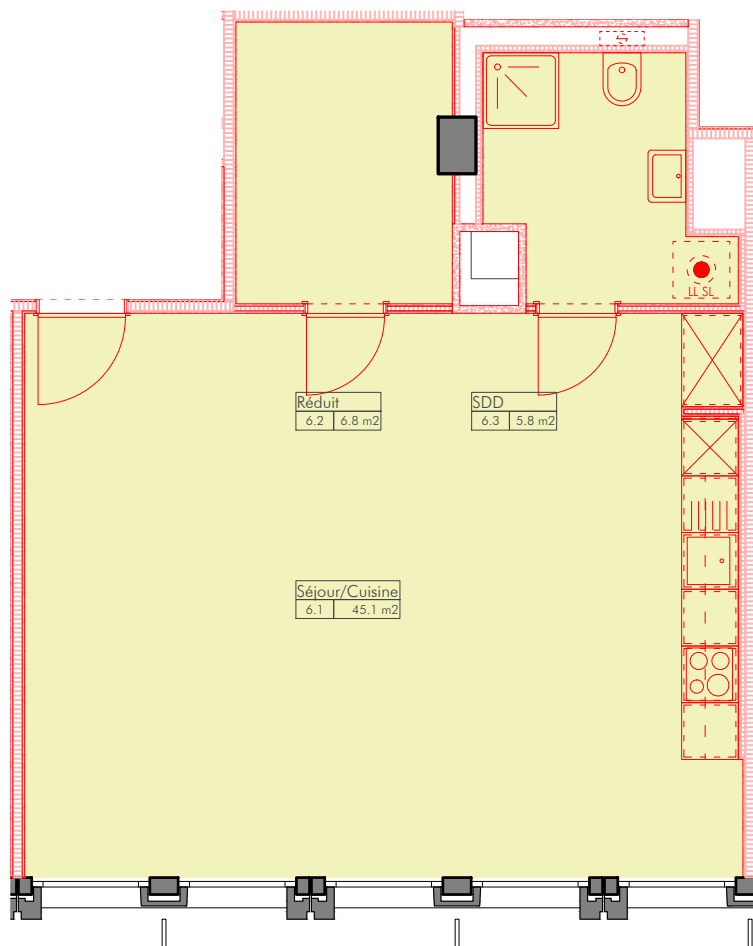
- Entrée 3.5 m²
- Séjour/cuisine 36.0 m²
- Salle de douche 5.6 m²

Surface nette habitable : 45.1 m²



Logements Mornex

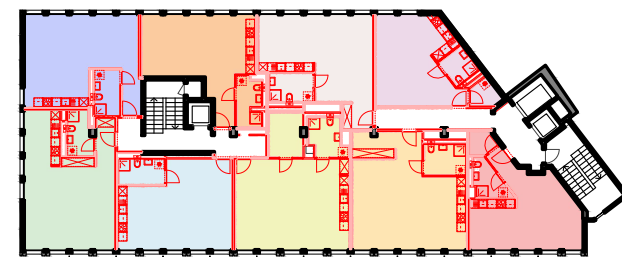




Lot 15

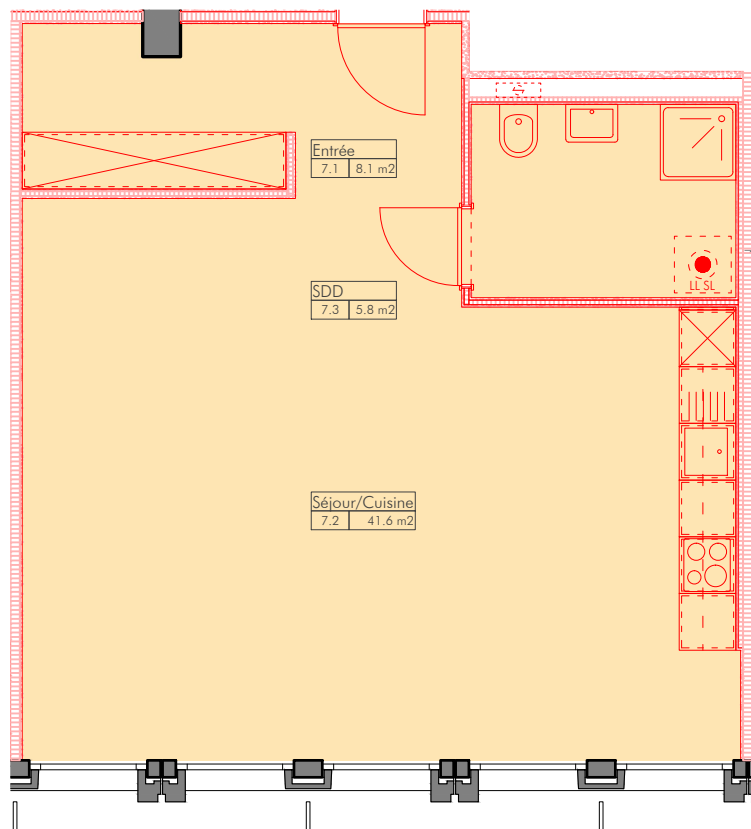
- Réduit 6.8 m²
- Séjour/cuisine 45.1 m²
- Salle de douche 5.8 m²

Surface nette habitable : 57.7 m²



Logements Mornex

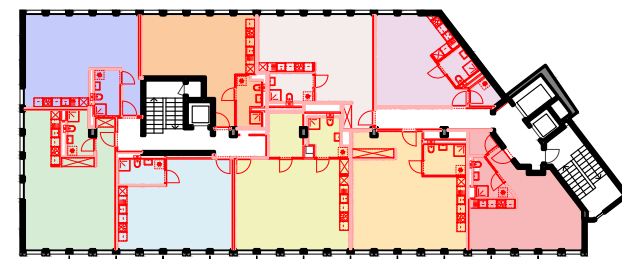




Lot 16

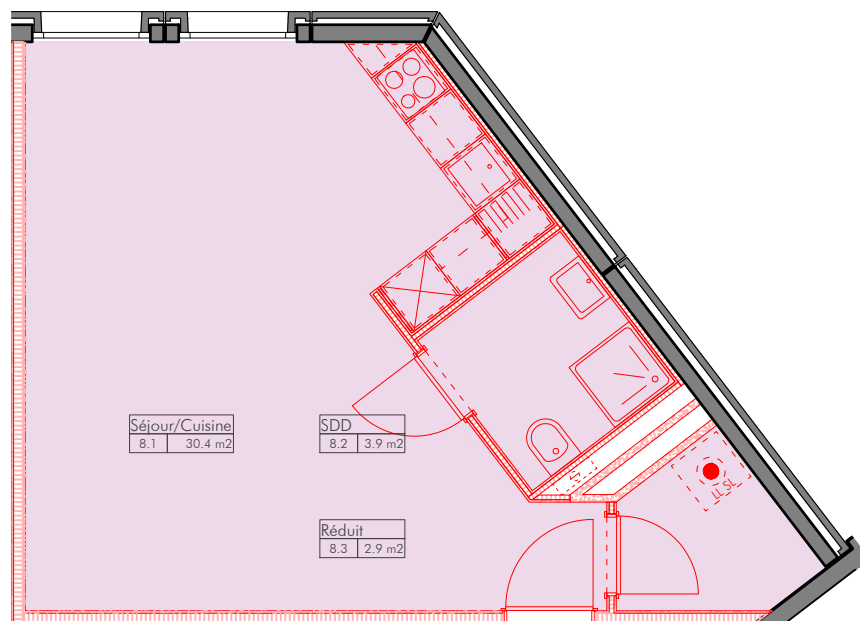
- Entrée 8.1 m²
- Séjour/cuisine 41.6 m²
- Salle de douche 5.8 m²

Surface nette habitable : 55.5 m²



Logements Mornex

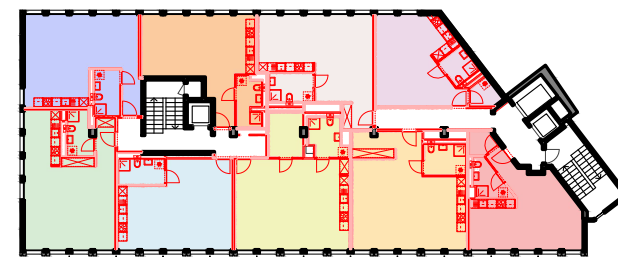




Lot 17

- Réduit 2.9 m²
- Séjour/cuisine 30.4 m²
- Salle de douche 3.9 m²

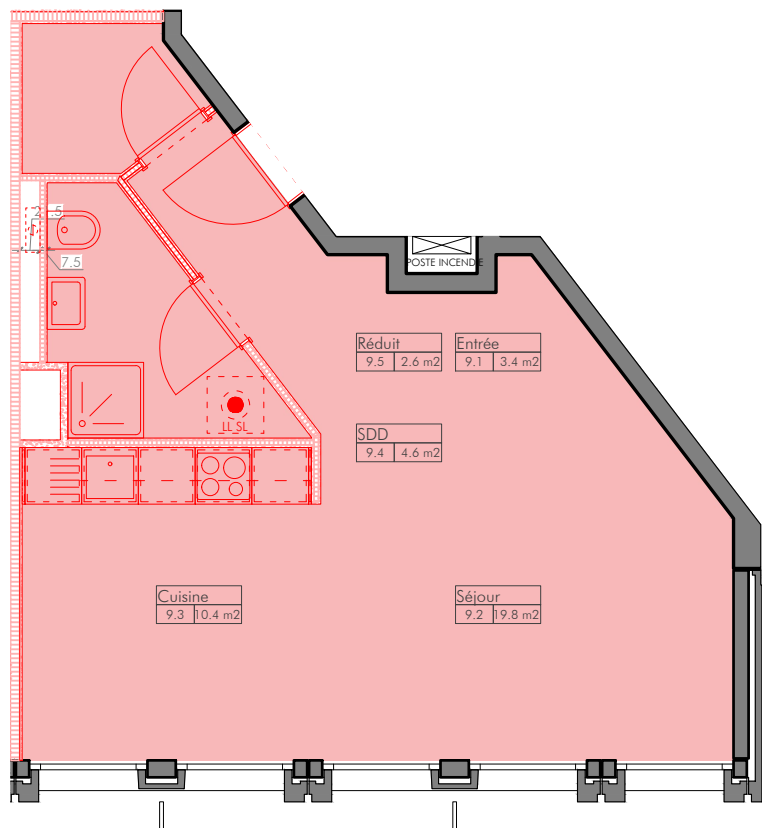
Surface nette habitable : 37.2 m²



Logements Mornex

Parcelle n°5885 à Lausanne | Chemin de Mornex 2-4 | 3ème étage | Lot 17 | 1:80 | 11.10.2023
 atelier zéro2 sa | avenue du théâtre 14 | 1005 lausanne | tél. +4121 624 85 16 | mail@zero2.ch

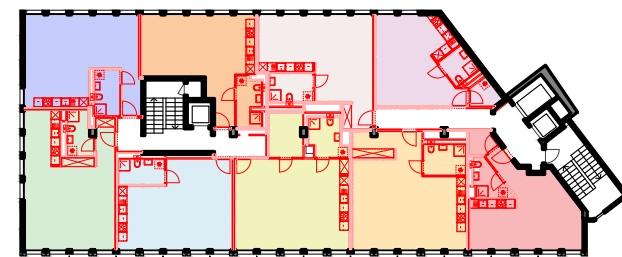




Lot 18

- Entrée 3.4 m²
- Réduit 2.6 m²
- Séjour/cuisine 19.8 m²
- Cuisine 10.4 m²
- Salle de douche 4.6 m²

Surface nette habitable : 40.8 m²



Logements Mornex

