



À louer

Rue du Conseil-Général 3/5, 1205 Genève

 **JLL** SEE A BRIGHTER WAY

Rue du Conseil-Général 3-5/ , 1205 Genève

Bureaux de standing à louer à Plainpalais

Bureaux de standing de 290 m² disponibles à la location à deux pas de la Place de Neuve. Avec un mixte d'open space et bureaux cloisonnés cet espace est idéal pour une entreprise à la recherche d'un emplacement à la fois vivant et facilement accessible en transports publics.





Loyer CHF 520.- / m² / an
Soit, CHF 150'800.- / an

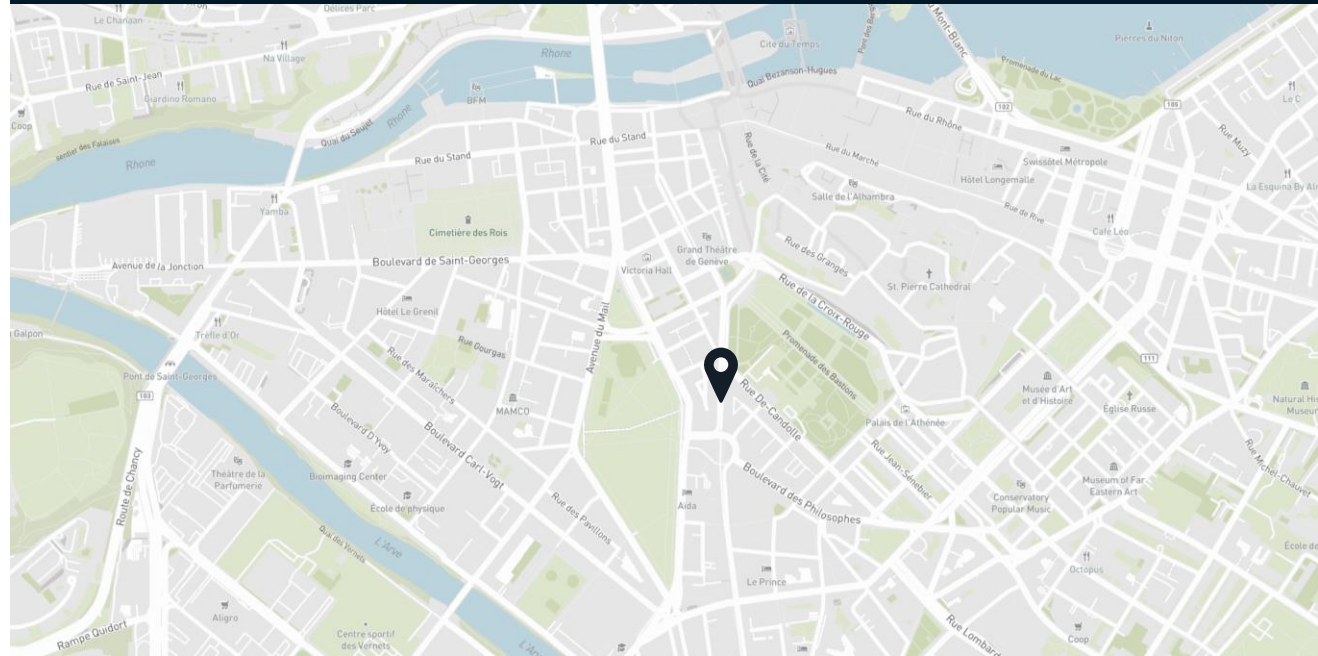
Charges CHF 55.- / m² / an



Vue d'ensemble

- Surface : 290 m² disponible
- Etage : 4^{ème}
- Mixte open space et bureaux cloisonnés
- 2 Kitchenettes
- Système d'air rafraîchit
- Ascenseurs

				
Gare de Genève Cornavin	6 min	12 min	7 min	21 min
Genève aéroport	17 min	26 min	22 min	-
Bel-Air	3 min	6 min	3 min	10 min
Lancy-Pont-Rouge	9 min	14 min	15 min	31 min

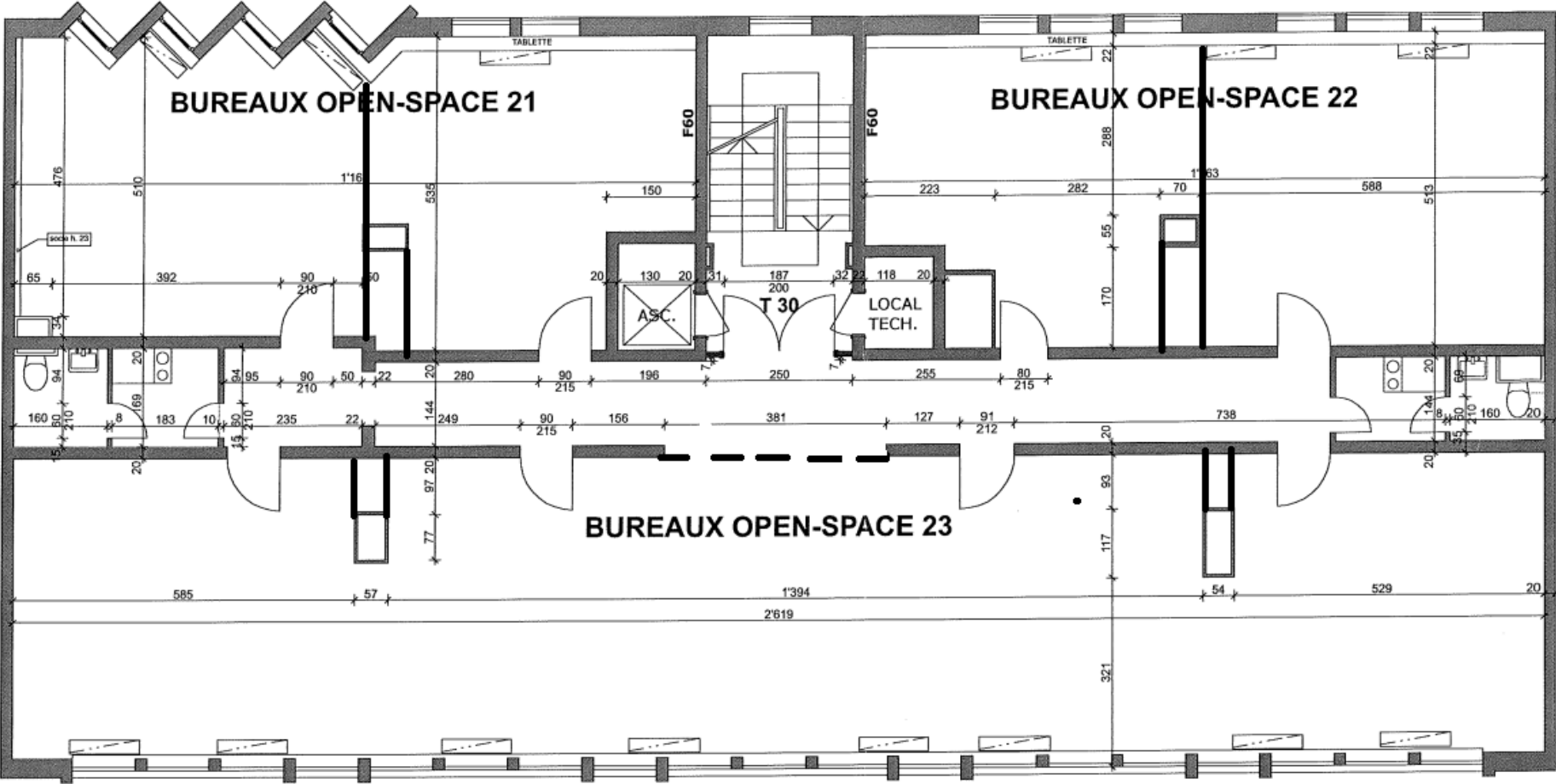


Rue du Conseil-Général 3-5/ , 1205 Genève

Photos des surfaces



Plan des surfaces





JLL

Arnaud Monney

Associate

arnaud.monney@jll.com

+41 79 739 93 30

DISCLAIMER

The material herein is intended as a guide only, no liability for negligence or otherwise is assumed for the material contained herein by Jones Lang LaSalle, its principal or its servants or its agents. No material contained herein shall form the basis of or be part of any agreement and no warranty is given or implied as to the accuracy of the whole or any part of the material. Prospective purchasers/tenants should not rely on the material but should make their own enquiries and satisfy themselves of all aspects of the material. Any liability by Jones Lang LaSalle, its principal, its servants or its agents in any way connected with the brochure, whether or not such liability results from or involves negligence, will not exceed \$1000.00.