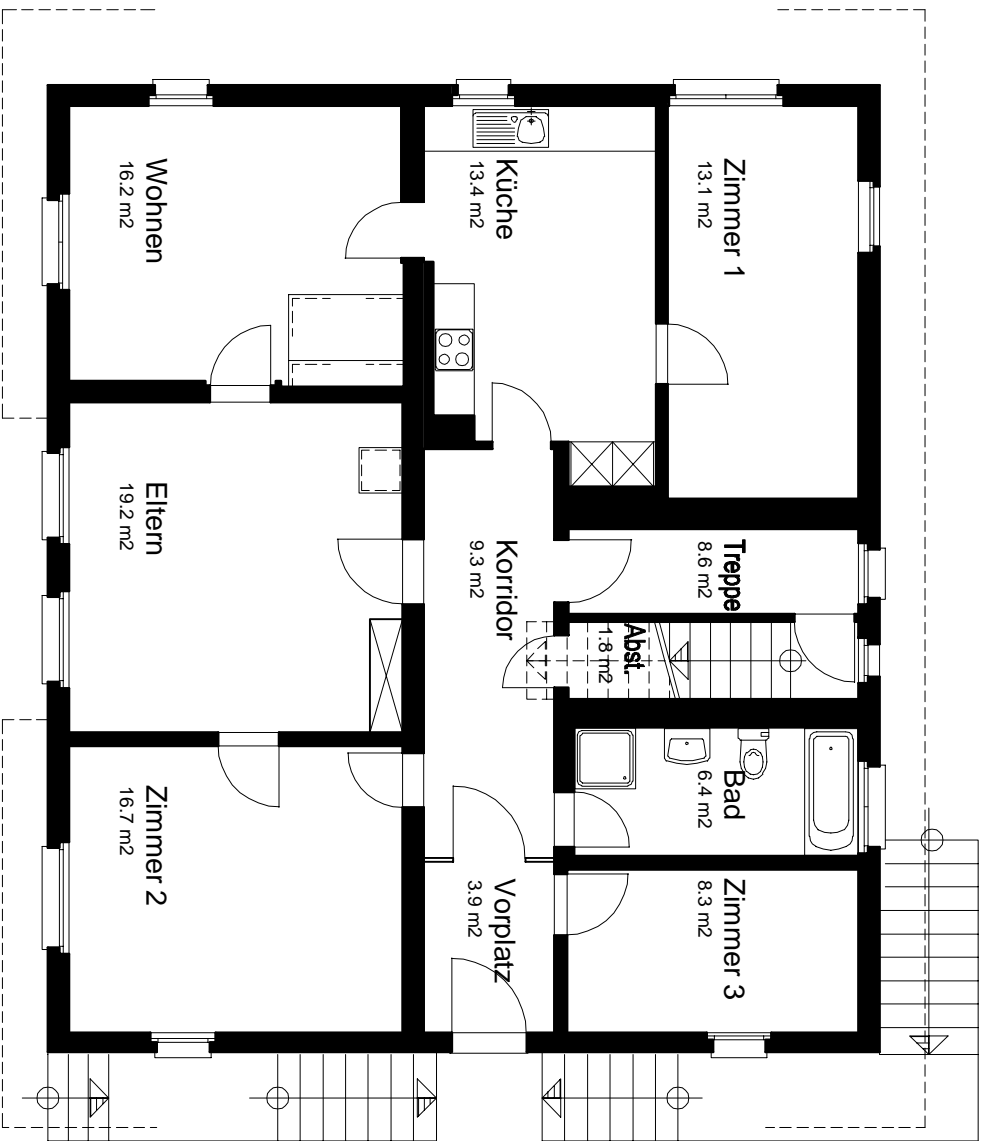
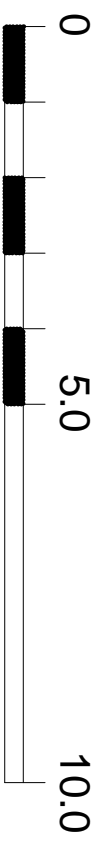
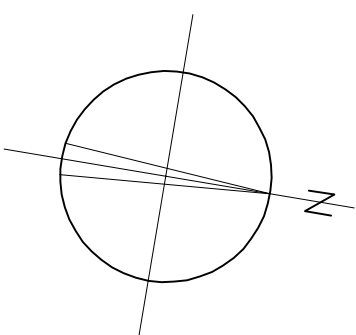
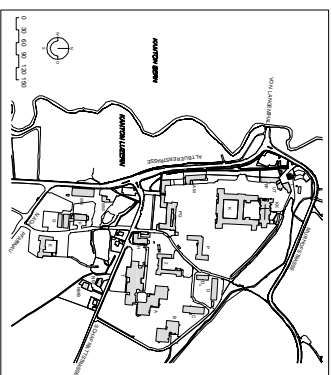


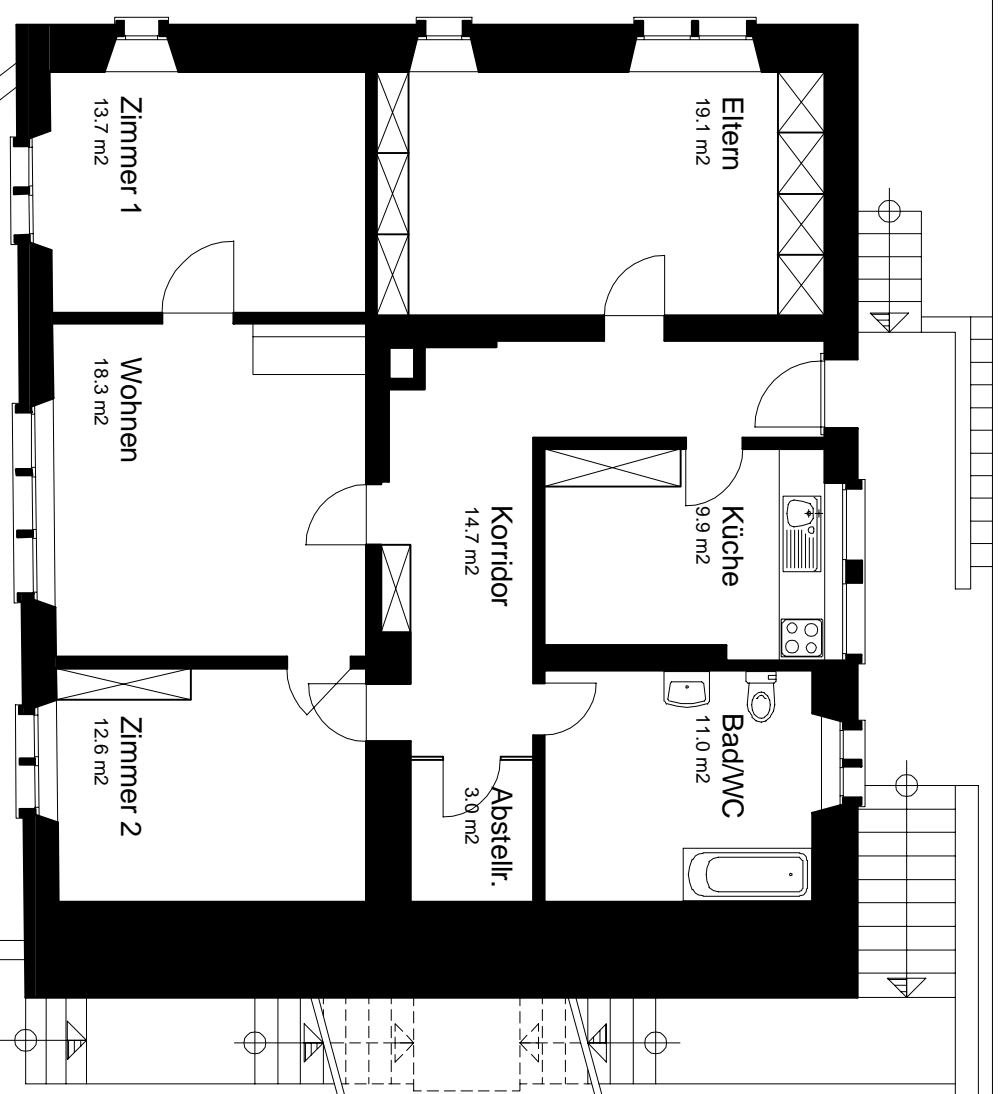
011	Luz. Psychiatrie, 4915 St. Urban	Dat.: 01.07.2015
K01	Kanzlerhaus	Gez.: LT/CAD
	<b>Grundrisse UG, EG, OG</b>	Rev.: Mst.: 1 : 100

SAP 514

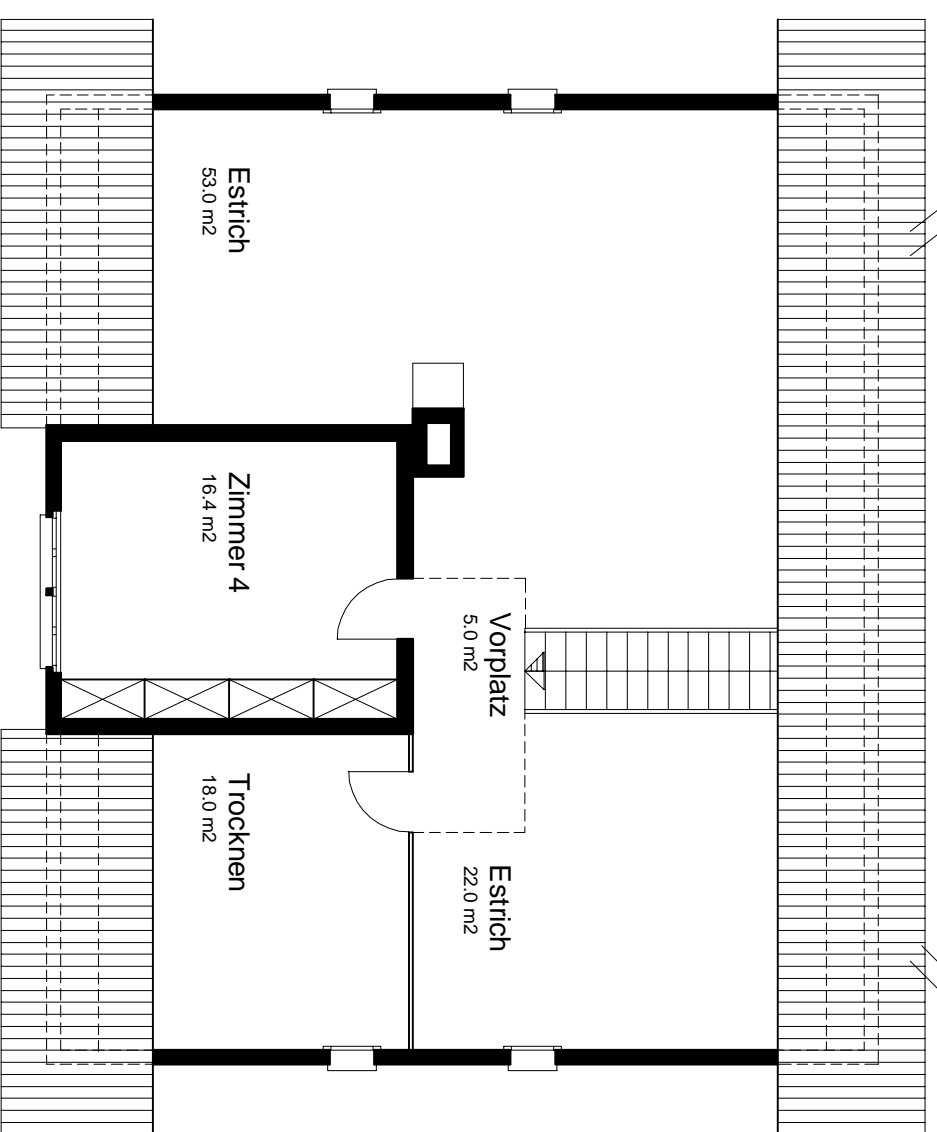
A3



**Erdgeschoss**



**Untergeschoss**



**Dachgeschoss**